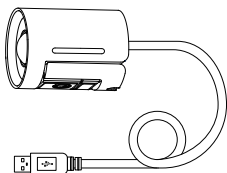


# Yealink

## UVC30 Content Camera



English | 简体中文

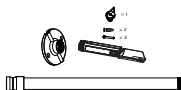
### Quick Start Guide (V1.0)

[www.yealink.com](http://www.yealink.com)

# Package Contents



UVC30 Room



Mounting Bracket and Accessories



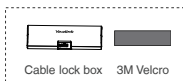
Screwdriver



5m EXT  
USB Cable



L-shaped  
Black Tapex4



Cable lock box 3M Velcro

Cable Lock Box

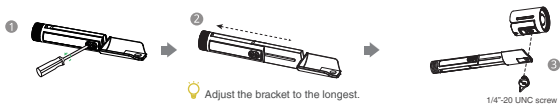


Quick Start Guide

💡 When the whole wall is a whiteboard, you can use the L-shaped tapes to mark the four corners of the whiteboard, so that the camera adapts according to the limited range.

## Content Camera Installation

### 1. Assemble the bracket



### 2. Assemble the metal telescopic rod

The length of the metal telescopic rod depends on the width of the whiteboard when you mount the content camera on a wall:

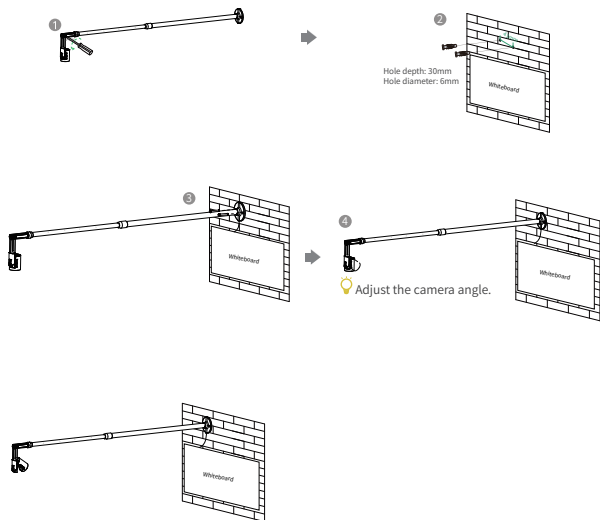
The width of the whiteboard	Select the scale of the metal telescopic rod
183cm (6ft)	64cm (2.10ft)
213cm (7ft)	75cm (2.45ft)
244cm (8ft)	86cm (2.80ft)
274cm (9ft)	96cm (3.15ft)





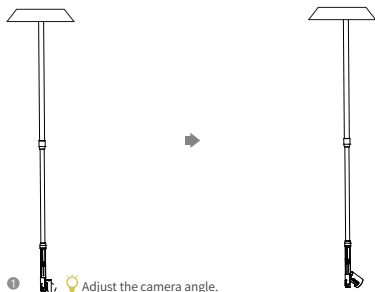
### 3. Assemble the content camera

- (Recommended) Mount on a wall



💡 The camera can be routed down or towards the ceiling.

## • Suspend on the ceiling



The height of the camera installation must meet local building rules. If the USB cable that comes with the camera is not long enough, please choose the desired extension cable solution.

You can use the camera preview in the Microsoft Teams Rooms app to determine the final placement of the camera. For more information on how to use the content camera with Microsoft Teams Room, please refer to <https://docs.microsoft.com/en-us/MicrosoftTeams/rooms/content-camera>.

## LED Indicator Instructions

LED indicators on the UVC30 Room:

LED Status	Description
Off	The UVC30 Room is not properly connected to the mini-PC or the UVC30 Room is inactive.
Solid green	The UVC30 Room is active.
Flashing orange	The UVC30 Room is upgrading firmware.
Flashing red	The UVC30 Room is in recovery mode and the firmware has not been upgraded.

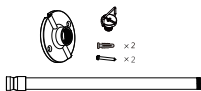
## Using Your Content Camera

For more information on how to use your content camera, please refer to Yealink RoomConnect User Guide.

# 包装清单



UVC30 Room



支架和配件



螺丝刀



5m  
USB 延长线



L型黑色胶带×4



USB锁线盒 3M 魔术贴

USB锁线盒

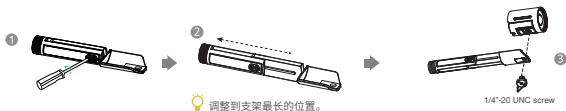


快速入门指南

💡 当整面墙是白板时,你可以使用L型胶带标定白板四个角,摄像机根据限定的范围进行自适应。

## 安装白板摄像机

### 1. 安装支架



💡 调整到支架最长的位置。

1/4"-20 UNC screw

### 2. 安装金属伸缩杆

挂墙安装时,请根据白板的宽度选择金属伸缩杆的长度:

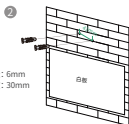
白板宽度	选择金属伸缩杆的刻度
183cm (6ft)	64cm (2.10ft)
213cm (7ft)	75cm (2.45ft)
244cm (8ft)	86cm (2.80ft)
274cm (9ft)	96cm (3.15ft)



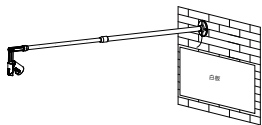
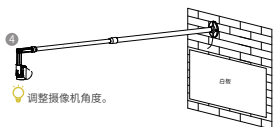
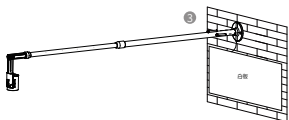


### 3. 固定白板Camera

- (推荐) 墙装

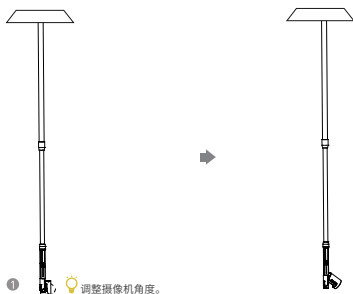


打孔直径: 6mm  
打孔深度: 30mm



摄像机可以朝下或者朝天花板走线。

## • 吊装



- 💡 摄像机安装的高度需满足当地建筑规范。若摄像机自带的USB线不够长，请自行选择延长线方案。
- 💡 在使用摄像机时可以先通过Teams Rooms app预览调整摄像机位置。更多关于白板摄像机如何搭配微软Teams Room使用，请参阅 <https://docs.microsoft.com/zh-cn/MicrosoftTeams/rooms/content-camera>。

## 指示灯介绍

UVC30 Room指示灯介绍如下：

指示灯状态	说明
关闭	UVC30 Room 没有正确连接到mini-PC上或未处于正常工作状态。
绿灯常亮	UVC30 Room 处于正常工作状态。
橙灯闪烁	UVC30 Room 固件更新中。
红灯闪烁	UVC30 Room 进入恢复模式，还未固件更新。

## 使用白板摄像机

更多关于如何使用白板摄像机，请参阅Yealink RoomConnect用户指南。

## Regulatory Notices

### Operating Ambient Temperatures

- Operating temperature: +32 to 104°F (0 to 40°C)
- Relative humidity: 5% to 90%, noncondensing
- Storage temperature: -22 to +160°F (-30 to +70°C)

### Warranty

Our product warranty is limited only to the unit itself, when used normally in accordance with the operating instructions and the system environment. We are not liable for damage or loss resulting from the use of this product, or for any claim from a third party. We are not liable for problems with Yealink device arising from the use of this product; we are not liable for financial damages, lost profits, claims from third parties, etc., arising from the use of this product.

### Explanation of the symbols

#### ● DC symbol

is the DC voltage symbol.

#### ● WEEE Warning symbol

To avoid the potential effects on the environment and human health as a result of the presence of hazardous substances in electrical and electronic equipment, and users of electrical and electronic equipment should understand the meaning of the crossed-out wheeled bin symbol. Do not dispose of WEEE as unsorted municipal waste and have to collect such WEEE separately.

### Restriction of Hazardous Substances Directive (RoHS)

This device complies with the requirements of the EU RoHS Directive. Statements of compliance can be obtained by contacting support@yealink.com.

### Safety Instructions

Save these instructions. Read these safety instructions before use!

#### General Requirements

- Before you install and use the device, read the safety instructions carefully and observe the situation during operation.
- During the process of storage, transportation, and operation, please always keep the device dry and clean, avoid collision and crash.
- Please attempt not to dismantle the device by yourself. In case of any discrepancy, please contact the appointed maintenance center for repair.
- Please refer to the relevant laws and statutes while using the device. Legal rights of others should be respected as well.

#### Environmental Requirements

- Place the device at a well-ventilated place. Do not expose the device under direct sunlight.
- Keep the device dry and free of dusts.
- Do not place the device on or near any inflammable or fire-vulnerable object, such as rubber-made materials.
- Keep the device away from any heat source or bare fire, such as a candle or an electric heater.

#### Operating Requirements

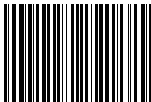
- Do not let a child operate the device without guidance.
- Do not let a child play with the device or any accessory in case of accidental swallowing.
- Please use the accessories provided or authorized by the manufacturer only.
- The power supply of the device shall meet the requirements of the input voltage of the device. Please use the provided surge protection power socket only.
- Before plugging or unplugging any cable, make sure that your hands are completely dry.
- Do not spill liquid of any kind on the product or use the equipment near water, for example, near a bathtub, washbowl, kitchen sink, wet basement or near a swimming pool.
- During a thunderstorm, stop using the device and disconnect it from the power supply. Unplug the power plug and the Asymmetric Digital Subscriber Line (ADSL) twisted pair (the radio frequency cable) to avoid lightning strike.

## About Yealink

Yealink is a global leading provider of enterprise communication and collaboration solutions, offering video conferencing service to worldwide enterprises. Focusing on research and development, Yealink also insists on innovation and creation. With the outstanding technical patents of cloud computing , audio, video and image processing technology, Yealink has built up a panoramic collaboration solution of audio and video conferencing by merging its cloud services with a series of endpoints products. As one of the best providers in more than 140 countries and regions including the US, the UK and Australia, Yealink ranks No.1 in the global market share of SIP phones shipments.

## Technical Support

Visit Yealink WIKI (<http://support.yealink.com/>) for the latest firmware, guides, FAQ, Product documents, and more. For better service, we sincerely recommend you to use Yealink Ticketing system (<https://ticket.yealink.com/>) to submit all your technical issues.



430104001329

- If the device is left unused for a rather long time, disconnect it from the power supply and unplug the power plug.
- When there is smoke emitted from the device, or some abnormal noise or smell, disconnect the device from the power supply, and unplug the power plug immediately.
- Contact the specified maintenance center for repair.
- Do not insert any object into equipment slots that is not part of the product or auxiliary product.
- Before connecting a cable, connect the grounding cable of the device first. Do not disconnect the grounding cable until you disconnect all other cables.

### Cleaning Requirements

- Before cleaning the device, disconnect it from the power supply.
- Use a piece of soft, dry and anti-static cloth to clean the device.
- Keep the power plug clean and dry.

## Troubleshooting

The unit cannot supply power to device other than Yealink device.

There is a bad connection with the plug.

1. Clean the plug with a dry cloth.
2. Connect it to another wall outlet.

The usage environment is out of operating temperature range.

1. Use in the operating temperature range.

The cable between the unit and the Yealink device is connected incorrectly.

1. Connect the cable correctly.
- You cannot connect the cable properly.
1. You may have connected a wrong Yealink device.
  2. Use the correct power supply.

Some dust, etc., may be in the port.

1. Clean the port.

Contact your dealer or authorized service facility for any further questions.

## FCC Statement

This device complies with part 15 of the FCC Rules. Operation is subject to the following

two conditions: (1) this device may not cause harmful interference, and (2) this device must accept any interference received, including interference that may cause undesired operation.

Any Changes or modifications not expressly approved by the party responsible for compliance could void the user's authority to operate the equipment.

## IC Statement

This device complies with Industry Canada's licence-exempt RSSs. Operation is subject to the following two conditions:

- (1) this device may not cause interference; and
- (2) this device must accept any interference, including interference that may cause undesired operation of the device. CAN ICES-3(B)

Le présent appareil est conforme aux CNR d'Industrie Canada applicables aux appareils radio exempts de licence. L'exploitation est autorisée aux deux conditions suivantes :

- (1) l'appareil ne doit pas produire de brouillage;
- (2) l'utilisateur de l'appareil doit accepter tout brouillage radioélectrique subi, même si le brouillage est susceptible d'en compromettre le fonctionnement.NMB-3(B)

## Contact Information

YEALINK NETWORK TECHNOLOGY CO., LTD.  
309, 3rd Floor, No. 16, Yun Ding North Road, Huli District, Xiamen City, Fujian, P.R. C  
YEALINK (EUROPE) NETWORK TECHNOLOGY B.V.  
Strawinskylaan 3127, Atium Building, 8th floor, 1077ZK Amsterdam, The Netherlands  
YEALINK (USA) NETWORK TECHNOLOGY CO., LTD.  
999 Peachtree Street Suite 2300, Fulton, Atlanta, GA, 30309, USA  
Made in China



YEALINK(XIAMEN) NETWORK TECHNOLOGY CO.,LTD.  
Web: [www.yealink.com](http://www.yealink.com)  
Copyright©2020YEALINK(XIAMEN) NETWORK  
TECHNOLOGY CO.,LTD.All rights reserved.